



## 37 Greenwich High Road, London, SE10 8GS Offers in excess of £440,000

Goodmove present this 2 bedroom apartment for QUICK sale on Greenwich High Road Greenwich SE10.

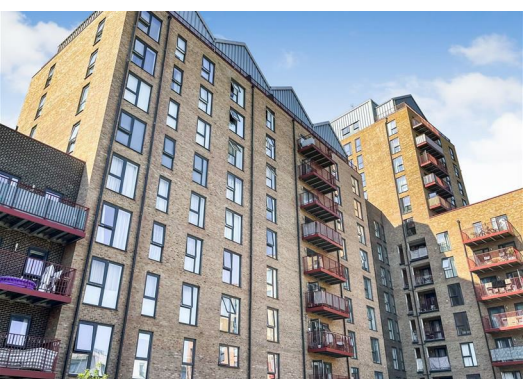
A beautifully presented, two double bedroom two bathroom modern apartment in Cowan House, a popular gated-development.

The property also benefits from a private balcony which overlooks the creek and has an amazing city view.

Cowan House is conveniently located for all of the attractions that the Royal Greenwich offers and with the DLR and overland BR just yards away this property will prove popular with City professionals.

The property has been attractively priced to promote a quick sale and would invite all buyers in a position to proceed to view.

Please call for more information.



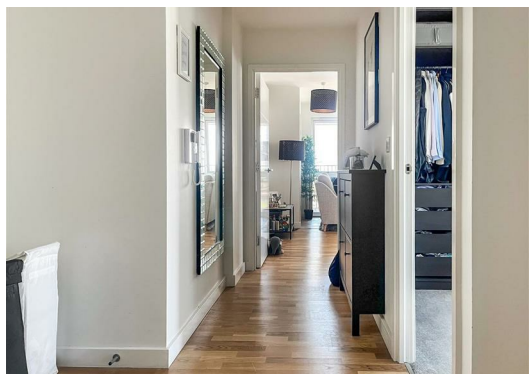
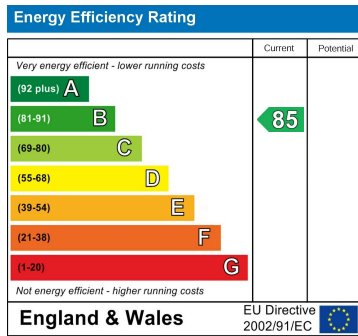
**Disclaimer**

1. MONEY LAUNDERING REGULATIONS: Intending purchasers will be asked to produce identification documentation at a later stage and we would ask for your co-operation in order that there will be no delay in agreeing the sale.
2. General: While we endeavour to make our sales particulars fair, accurate and reliable, they are only a general guide to the property and, accordingly, if there is any point which is of particular importance to you, please contact the office and we will be pleased to check the position for you, especially if you are contemplating travelling some distance to view the property.
3. Measurements: These approximate room sizes are only intended as general guidance. You must verify the dimensions carefully before ordering carpets or any built-in furniture.
4. Services: Please note we have not tested the services or any of the equipment or appliances in this property, accordingly we strongly advise prospective buyers to commission their own survey or service reports before finalising their offer to purchase.
5. THESE PARTICULARS ARE ISSUED IN GOOD FAITH BUT DO NOT CONSTITUTE REPRESENTATIONS OF FACT OR FORM PART OF ANY OFFER OR CONTRACT. THE MATTERS REFERRED TO IN THESE PARTICULARS SHOULD BE INDEPENDENTLY VERIFIED BY PROSPECTIVE BUYERS OR TENANTS. NEITHER GOODMOVE NOR ANY OF ITS EMPLOYEES OR AGENTS HAS ANY AUTHORITY TO MAKE OR GIVE ANY REPRESENTATION OR WARRANTY WHATSOEVER IN RELATION TO THIS PROPERTY.

**Leasehold Information**

242 years remaining on the lease  
 Ground rent: £560 per annum  
 Maintenance charge: £2151 per annum

This information is provided by the vendor and should be verified during the conveyancing process.



Ground Floor 4320 Park Approach, Thorpe Park, Leeds, LS15 8GB

Tel: 0113 892 1166

sales@goodmove.co.uk

www.goodmove.co.uk